

HILIGHT TRIBE - INTERNATIONAL RIDER 2019

ROAD VERSION

- Updated February 7 / Supersedes any previous version -

This rider is part of the contract. It should be returned and signed with the contract. Failure brought to its application invalidates the contract.

All the detail in this rider may seem restrictive, however, they ensure a quality show in good conditions. In case of problems with this rider, please contact the production manager.

The promoter agrees to comply strictly and bear all the technical and hospitality conditions requested below. No changes will be without the prior approval of the production manager.

Hilight Tribe is a live music band that requires a concert set up (FOH and MON mixing desks and a light desk).

THANK YOU

Page 1 CONTACT / TOURING PARTY

Page 5 INPUT LIST

Page 2 TOUR REQUIREMENTS

Page 6 STAGE PLOT

Page 3 TECHNICAL SPECIFICATIONS

Page 7 LIGHT REQUIREMENTS

Page 4 SOUND & BACKLINE REQUIREMENTS

Page 8 HOSPITALITY

ALL REQUIREMENTS ARE TO BE PROVIDED BY THE PROMOTER AT NO COST TO THE BAND

Advance / Preproduction - Bibus / regietour@kontshaprod.com

TOURING PARTY

8 people on tour

ARTISTIC CREW

5 musicians

TECHNICAL CREW

1 Stage monitor engineer

1 Tour Manager / Lighting designer / Driver

1 FOH sound engineer



HILIGHT TRIBE - TOUR REQUIREMENTS

PURCHASER REPRESENTATIVE

An English or French speaking personal representative of the purchaser with decision-making power shall be present and available to assist the tour manager from the arrival to the departure of the band.

VISAS / WORKING PERMITS

The promoter will provide and pay for all visas, work permits, and other documents necessary for the band to undertake the engagement.

ACCOMMODATION (From band arrival to band departure)

8 single rooms at a minimum 3 Star hotel, close to the venue.
8 breakfasts + 8 lunches + 8 dinners per day

RECORDING

The promoter agrees that no part of the band's performance shall be broadcasted, filmed, videotaped, televised, photographed or otherwise reproduced in any manner, audio or visually without the express written consent of the band, which must be obtained at least 2 weeks prior the engagement.

INSURANCE

It is agreed that the promoter is responsible for all insurance in respect of equipment and personal accident, including loss, damage, medical expenses and public liability for the entire party throughout the entire period of engagement.

The Promoter agrees and accepts that they will indemnify the band and all representatives and employees against all claims relating to damage or personal injury unless said injury or damage was caused directly by the actions or negligence of the band, its representatives or employees.

The band shall have no liability if it is determined in good faith that the performance is (or is likely to be) rendered impossible, hazardous or is otherwise prevented or impaired due to inclement weather. In such event the Promoter shall remain liable for the full contracted fee.

PLEASE SEND TO PRODUCTION MANAGER DETAILS OF ACCOMMODATION AS WELL AS COMPLETE TECHNICAL SPECIFICATIONS (SOUND, LIGHTS) AND ITINERARY SHEET AT LEAST 1 MONTH BEFORE SHOW DAY



HILIGHT TRIBE - TECHNICAL SPECIFICATIONS

Hilight Tribe is a live music band that requires a concert set up (FOH and MON mixing desks and a light desk) to ensure a quality show.

Sound systems, lights and backline should be set up in working condition before the band arrives. FOH mixing desk and light desk have to be at the floor, secured and centred, **facing the stage**.

STAGE

The stage shall have two sets of sturdy, solid, illuminated stairs (stage left and right).
The stairs must be secured to the stage with banisters on both sides of each set.
The stage must be covered on outdoor shows, including monitor mix area and front of house.
The stage must be clean and clear of all stage props and obstacles on.
Tour manager must have complete control over the stage and house lighting for the duration of the band's sound check and performance. The time and completion of the performance is to be decided with the said tour manager.

POWER

Must be stabilized at 220v / 50 cycles for all HILIGHT TRIBE backline. In case of local voltage at 110v, Promoter agrees to provide and pay for 7 transformers 110v / 220v / 16 amps (2 located at the mixing desks and 5 on the stage), with 2 sets of 4 French plug each.
Sound and Light shall be connected to 2 different sources.
The PA should be isolated from all other sources. It must be completely grounded.
ALL AC MUST HAVE ZERO (0) POTENTIAL BETWEEN GROUND AND NEUTRAL.

COMMUNICATIONS

2 way communications between F.O.H. & monitor desk

PERSONNEL

1 backliner
1 electrician familiar with the venue's power supplies
3 qualified sound technicians, experienced with all aspects of the sound system, monitors and stage
1 qualified light technician, experienced with all aspects of lights system

BARRICADE

One sturdy professional quality barricade erected securely in front of the stage, the sound wings and around the FOH lighting and mixing desk position.

SECURITY

The promoter shall at his own expense employ an adequate number of security guards; they shall protect the band and its crew and their properties during and after the performance. Particularly, security must be provided in the areas of the dressing room and the stage. Security protection shall start upon the arrival of the band equipment at the venue.

BACKSTAGE ACCESS

NO person shall be allowed on stage or backstage unless his/her presence is essential to the performance and permission has been obtained from the band tour manager. Tour manager will brief security chief, and stage security on requirement before doors are to be opened.

PASSES

The promoter will issue all the necessary passes for all HILIGHT TRIBE production staff. 8 passes are required.

VENUE CAMERAS

The promoter further guarantees that all arrangements for filming are agreed with the tour-manager prior to show day. Photographers are allowed to only photograph (without flash) from the pit.



HILIGHT TRIBE - SOUND REQUIREMENTS

Hilight Tribe is a live music band, which requires a concert set up (FOH and MON mixing desks and a light desk) to ensure a quality show.

FRONT OF HOUSE

Professional FOH sound system (type D&B, L Acoustics) adapted to the venue, with **Subwoofers (required)** controlled from the FOH mixing desk. FOH mixing desk have to be at the floor, secured and centred, **facing the stage.**

1 40 channels / 12 Aux professional mixing desk (Yamaha CL5, QL5 / Soundcraft VI / Midas / Digico)
1 EQ 2x31 bands Klark Teknik
10 channels of compression (Drawmer / Dbx)
3 channels of compression + gate (Drawmer / Dbx)
4 channels of gate (Drawmer)
4 effects units (Pcm70 / Spx 990 / M-One)

MONITORS - NO MONITOR CONSOLE RISKS NO SHOW

1 32 channels active splitter - **No gain sharing with FOH desk**
1 32 channels / 8 Aux professional mixing desk (M7CL / CL5, CL3, QL5 / Soundcraft VI / Midas / Digico) **on stage**
8 professional monitors, PFL included (115 HiQ / Max 15 / PMX15 / M15) with adapted amplifiers
Provide 2 XLR lines (aux 6 & 7 outputs) for 2 ear-monitors (supplied)

STAGE

Drum Riser (3m x 2m x 0,4 m) / 1 flight case for bass amp / 1 drum seat

9 power sockets 220 V / French plugs (including two at mixing desks)

1 BETA 52
1 SM91
1 C451
2 KM184
6 DI BSS AR 133
1 e609
5 e604
4 Sm57
6 Sm58
2 Beta 98 AD/C +**drum mount A98D**
1 MD421
5 short booms
12 tall booms

BACKDROP

1 backdrop 2m x 2m (provided by the band)



HILIGHT TRIBE - INPUT LIST

				INSERT	MON.	STAND
DRUM KIT	1	KICK IN	SM91	COMP + GATE	X	SHORT
	2	KICK OUT	BETA52	COMP + GATE		
	3	SNARE TOP	SM57	COMP + GATE	X	SHORT
	4	SNARE BOTTOM	E604	GATE		
	5	HH	C451 / 535		X	SHORT
	6	RACK TOM 1	E604	GATE	X	
	7	RACK TOM 2	E604	GATE	X	
	8	FLOOR TOM	E604	GATE	X	SHORT
	9	OH 1	KM184 / SM81			TALL
	10	OH 2	KM184 / SM81			TALL
	11	D-DRUM1	DI BSS AR133 PAD -20		X	
	12	D-DRUM2	DI BSS AR133 PAD -20		X	
BASS	13	BASS DI	DI BSS AR133 PAD -20	COMP	X	
GUITAR	14	NGONI DI	DI (PROVIDED)		X	
	15	GUITAR DI	DI BSS AR133 PAD -20	COMP	X	
	16	GUITAR AMP	E609			
	17	DIDGERIDOO 1	XLR	COMP	X	
	18	DIDGERIDOO 2	BETA98 AD/C+ A98D	COMP	X	
	19	THEREMIN	XLR	COMP	X	
	20	GTR VOX	SM58 + 2 XLR (3M)	COMP	X	TALL
PERC. 1	21	PERC VOX	SM58 + 2 XLR (3M)	COMP	X	TALL
	22	PERC VOX FX	SM58 + 2 XLR (3M)	COMP	X	2xTALL
	23	DJEMBE (LEAD)	E604	COMP	X	TALL
	24	DJEMBE FX	2 XLR		X	
	25	BOOGARABOO	MD421		X	TALL
	26	DARBOOKA	SM58	COMP	X	TALL
	27	TIMBALES / TABLAS	SM57		X	TALL
PERC. 2	28	BONGOS	SM57		X	TALL
	29	HANDSONIC	DI BSS AR133 PAD -20		X	
	30	SAMPLER	DI BSS AR133 PAD -20		X	
	31	CONGA HI	BETA98 AD/C+ A98D		X	
	32	TUMBA LO	SM57		X	TALL
	33	STAGE MGR	SM58		X	
	34	TALKBACK	SM58		X	



LIGHT REQUIREMENTS

CONTROL DESKS

1 Grand MA Light + 1 Light Commander

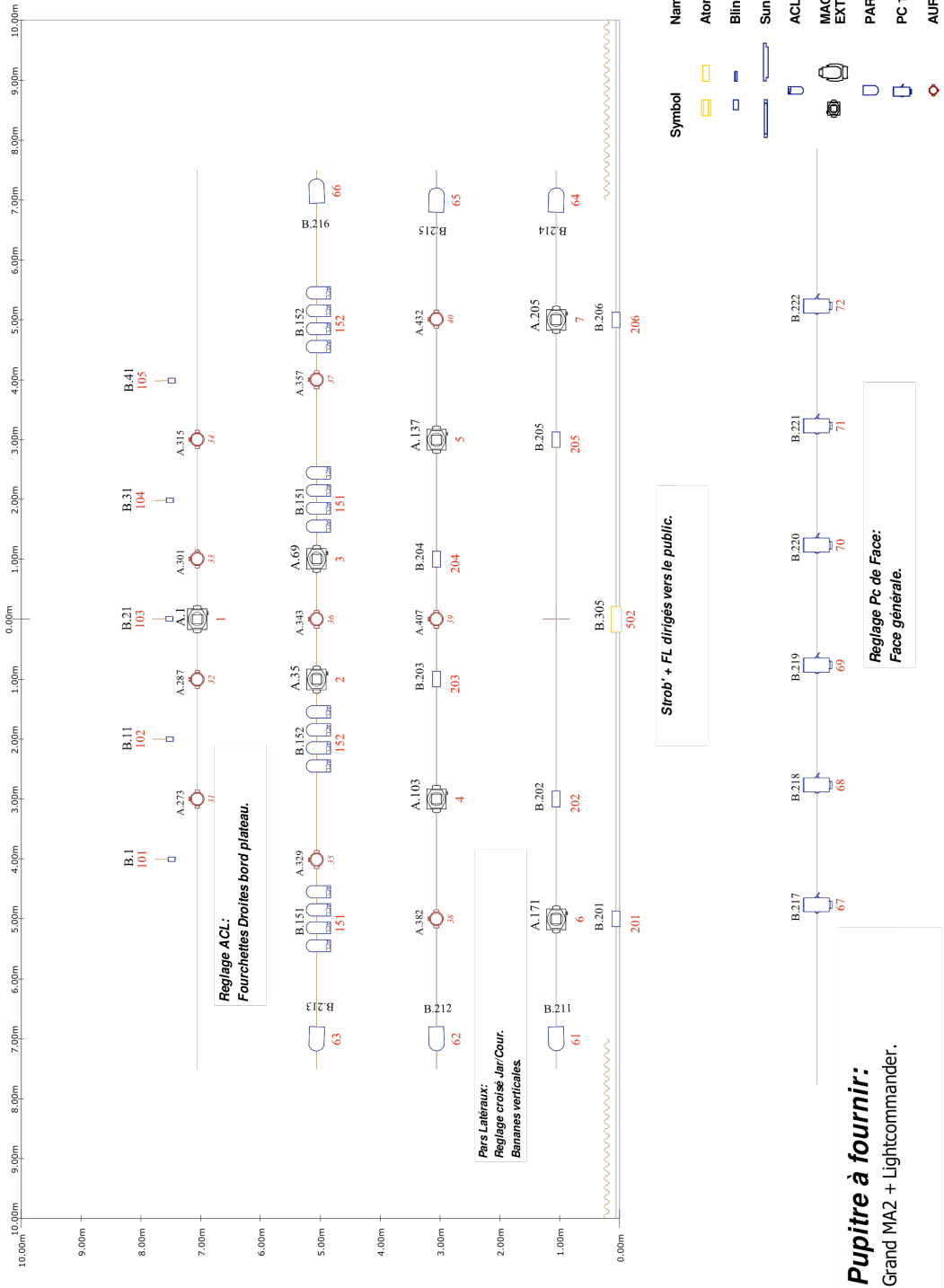
Light desk have to be at the floor, secured and centred, **facing the stage**

Grill Hilight Tribe 2019

Light Design by "Aurel"

+33 614 554 756

a_escuriol@yahoo.fr

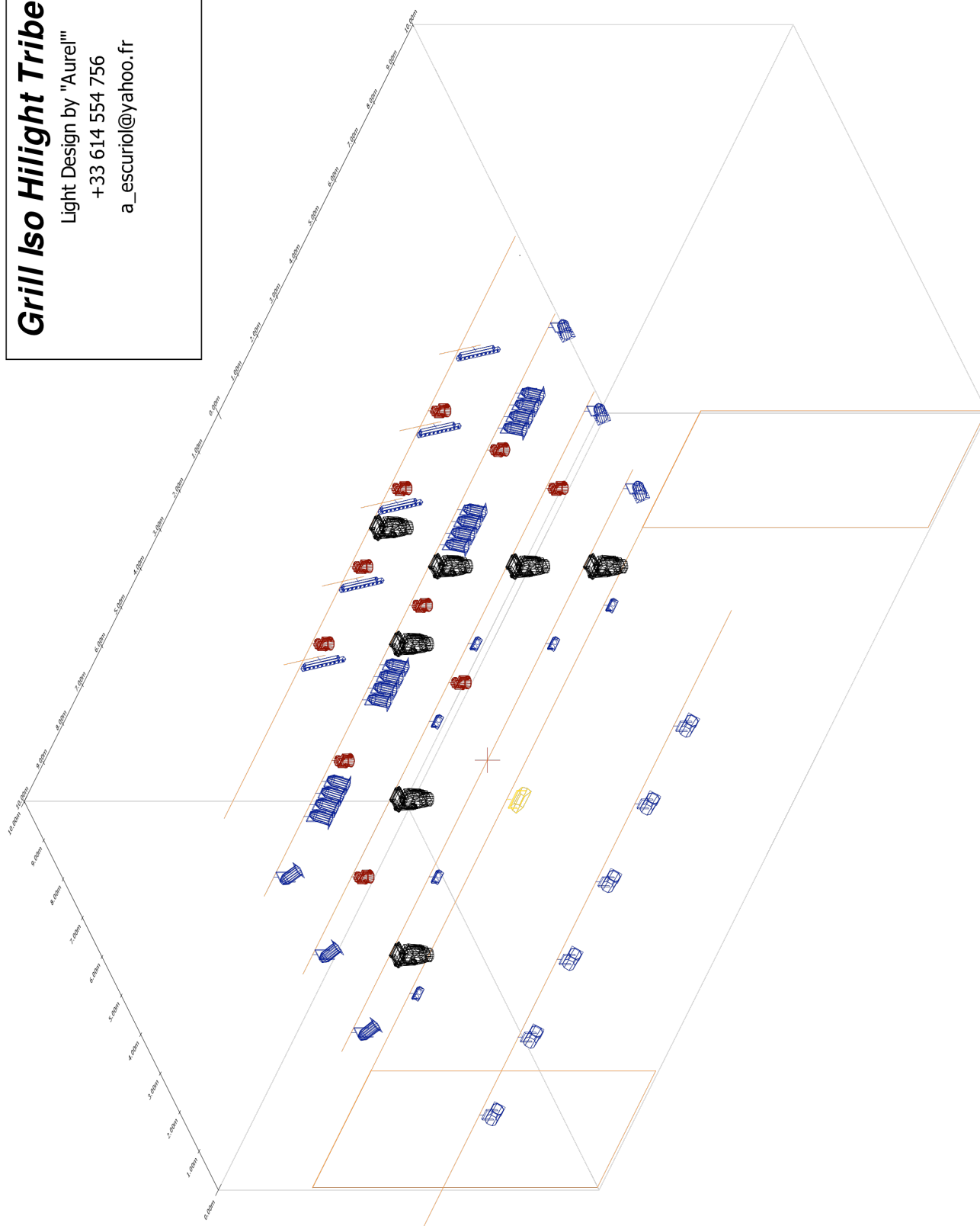


Grill Iso Hilight Tribe 2019

Light Design by "Aurel"

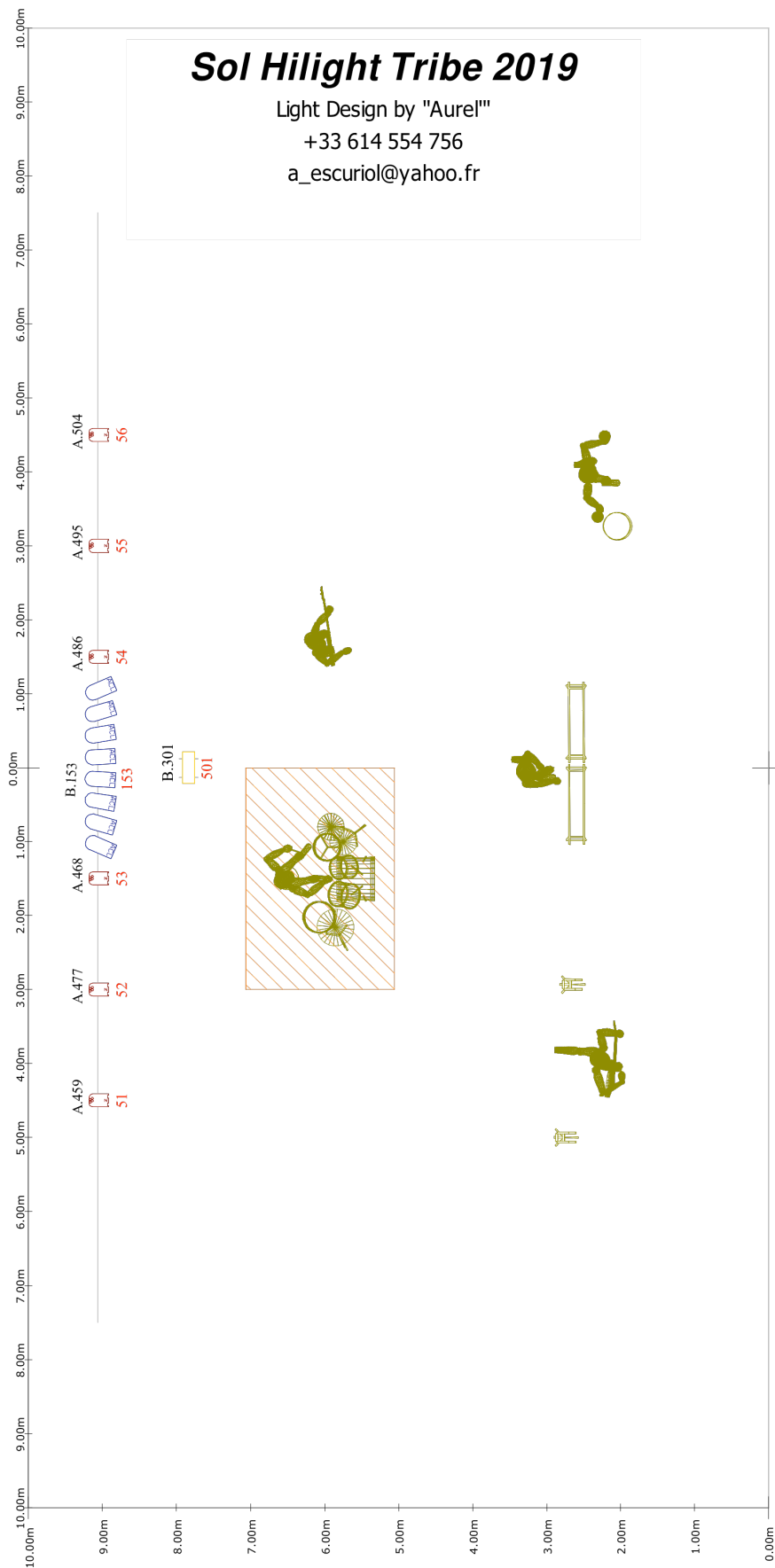
+33 614 554 756




a_escuriol@yahoo.fr



Sol Hilight Tribe 2019

Light Design by "Aurel"
+33 614 554 756
a_escuriol@yahoo.fr



Symbol	Name	Count
	ACL	1
	Atomic 3000	1
	Rush PAR 2 RGBW Zoom	6

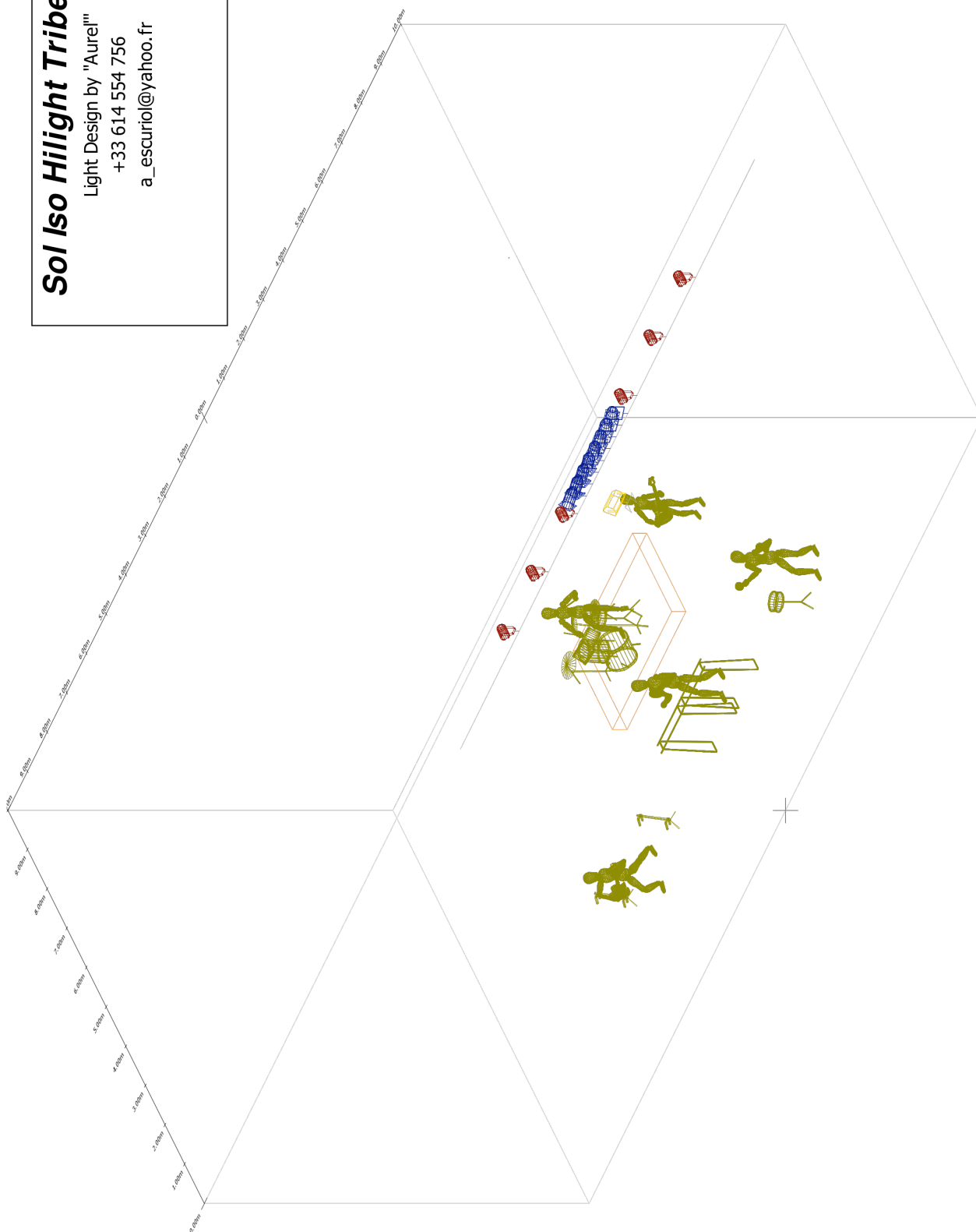


Sol Iso Hilight Tribe 2019

Light Design by "Aurel"

+33 614 554 756

a_escuriol@yahoo.fr



HILIGHT TRIBE - HOSPITALITY

CATERING

A cold vegetarian catering (bread / butter / cheese / vegetables)	3 large bottles of still water
1 tray of organic fresh & dry fruits	2 sugarfree Reb Bull
1 bottle of red wine	3 large soda bottles fresh (Coca + Coca Zero + Ice tea)
Coffee / tea	2 litres of Coconut Water
6 cooled Corona	6 cooled local beer
2 bottles of organic fruit juice (Orange + Apple)	6 cooled 1664
	2 litres of plant Milk

MEALS

Important: 3 crew members are vegetarians and do not eat egg neither fish (dairy required).

8 qualitative, balanced, hot and complete meals (starter, hot dish, dessert) :

7 meals three hours before the performance (including the 3 vegetarians) + 1 meal after the performance

Also provide 8 sandwiches after the performance (including 3 vegetarians without eggs)

STAGE

12 small bottles of water, **2 cans of Coconut Water, 3 Gatorade or Powerade (not Redbull)** and 6 clean towels

PARKING

Provide a secure parking for the band's van (L = 7.00 m x l = 2m x H = 3 m) as close as possible to the stage.

ACCOMMODATION

At a minimum 3 Star hotel, close to the venue with a secure parking for the band's van (L = 7.00 m x l = 2m x H = 3 m) (WIFI required):

8 single rooms Breakfast and WIFI included

8 breakfasts + 8 lunches + 8 dinners per day

